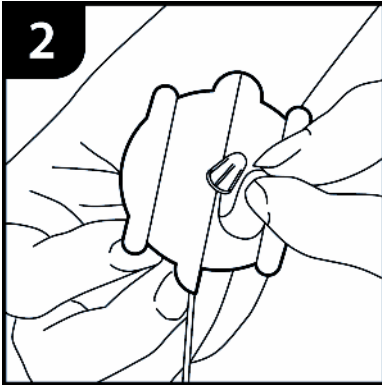


Remove the Saflo 90 from its packaging. Ensure that the needle protector is in place and there are no visible signs of damage to the product.

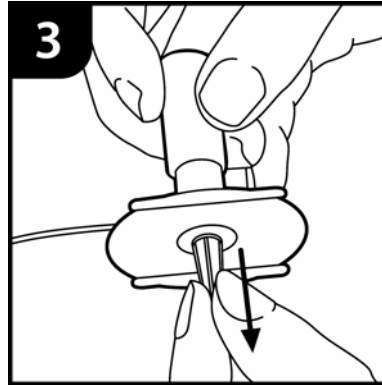
Note the product code and batch number if required for record keeping.

Prime the infusion set according to local procedures or, if used with an infusion pump, according to the pump manufacturer's instructions.

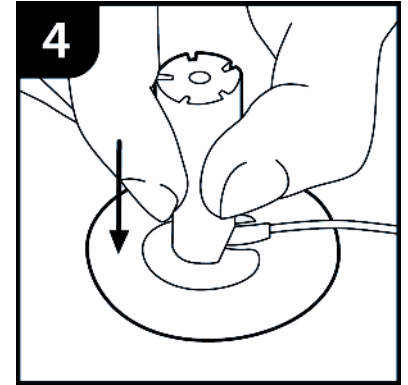
Prepare the infusion site according to local guidelines.



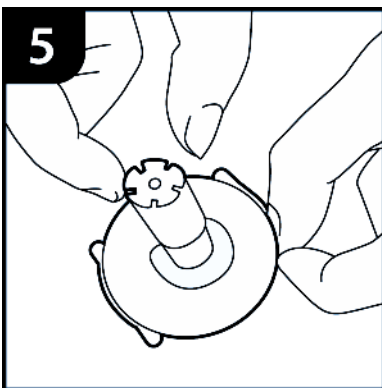
Remove the central portions of the tape from the infusion set.



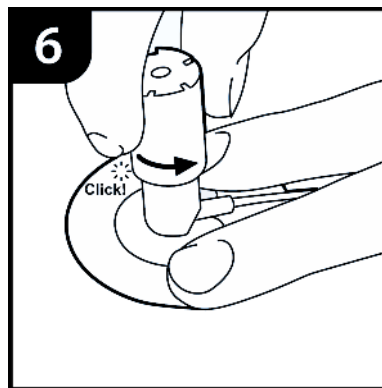
When ready to insert the infusion set, remove the needle protector.



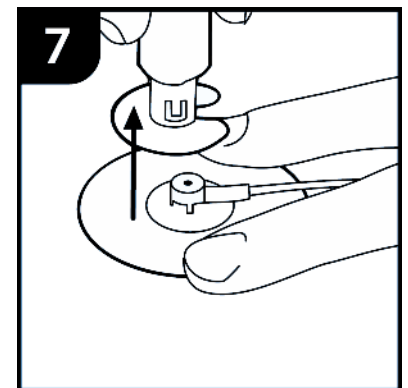
Insert the infusion set into the tissue with a smooth downward motion. Press the central portion of the tape to ensure the infusion set is firmly attached to the skin.



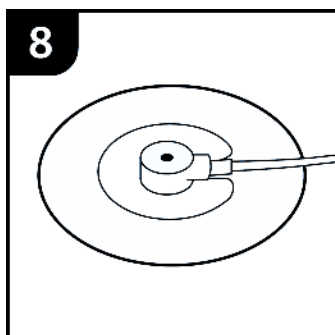
Remove the side portions of the tape backing and smooth the tape onto the skin surface.



Twist the cap of the device gently to the left through approximately $\frac{1}{4}$ turn. A click will be heard and a visible indicator will appear at the top of the cap to show that the needle has been withdrawn and is fully protected.



Hold down the tape of the infusion set and lift the needle assembly away from the site.



Move the protective cover along the tubing and press gently down onto the infusion site.

Dispose of the protected needle assembly in a container suitable for contaminated waste according to local procedures.