

## Medtronic i-port Abbreviated Instructions

Users should familiarise themselves with the manufacturer's full instructions for use before using this device.

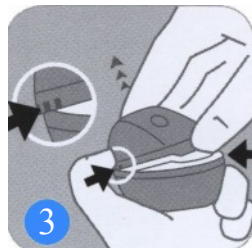
Clean your hands and prepare the infusion site according to local guidelines.  
Remove the i-port from its box.



1 Pull the red tab and remove the seal



2 Peel off the sterile paper cover



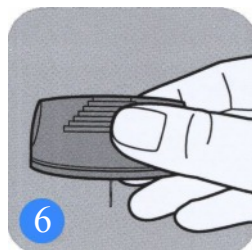
3 Securely hold the inserter and remove the plastic lid



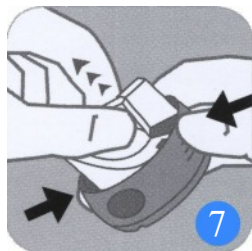
4 Remove the adhesive liner from the adhesive tape



5 Twist and remove the needle guard from the introducer needle



6 Hold the i-port with the introducer needle facing down



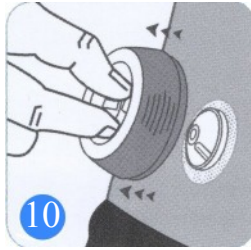
7 Hold the i-port with your fingers on the **lined ridges** and pull up on the centre of the inserter until it clicks into the locked position



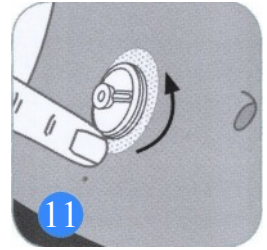
8 Place the i-port against the prepared site and squeeze **both smooth round indentations** simultaneously to insert the device



Press down on the centre of the inserter to secure the i-port to the skin



Grip the centre of the inserter only, and gently pull to remove the inserter from the i-port

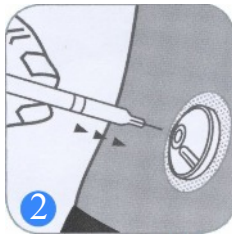


Smooth the adhesive pad to secure it against the skin

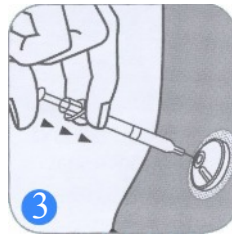
## Using the i-port



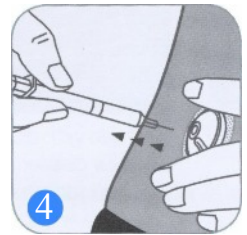
Clean the septum before each injection



Insert the needle into the septum



Slowly inject the prescribed amount of medicine



Remove the injection needle

Please note that even though the needle has not penetrated the skin it should still be regarded as a contaminated sharp and disposed of in the recommended way.

To remove the i-port just take hold of the edge of the adhesive pad and remove from the skin.

Dispose of the i-port in a container for contaminated waste.

