

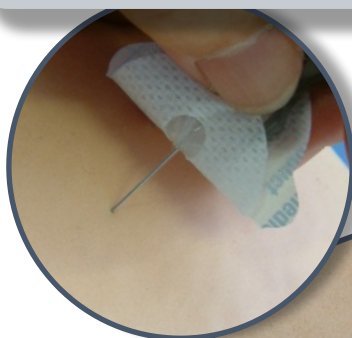
Silhouette™ Infusion Set

For the highest levels of comfort, security and safety in subcutaneous infusion practice

The Silhouette™ infusion set is suitable for all long term applications of subcutaneous drug infusion, and is widely used for the administration of insulin, diamorphine and a range of other drugs. It is particularly suitable where there may be physical limitations on the depth of penetration of the catheter, as it allows for shallow insertion angles.

Code	Description	NHS Catalogue	Tubing Length
MMT-371	Silhouette 110cm	FSB701	110cm
MMT-373	Silhouette 60cm	FSB702	60cm

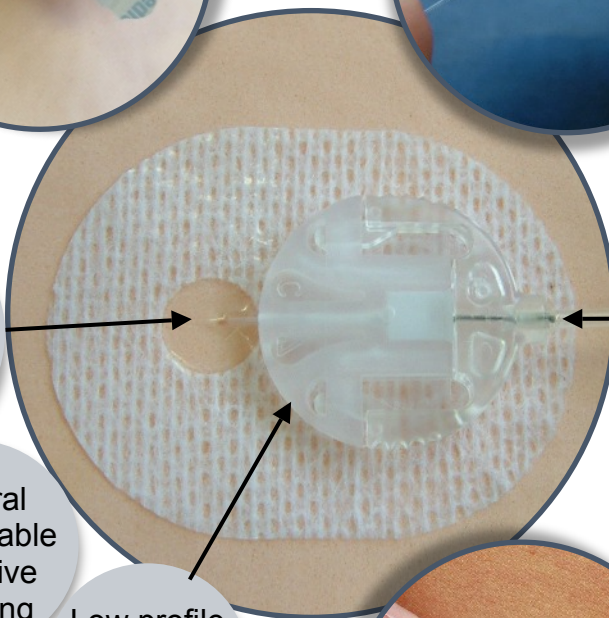
Easily adjust the angle of insertion to suit a variety of patient types and applications



Soft polyurethane catheter for optimum patient comfort and drug compatibility



Clear dressing area to view catheter insertion

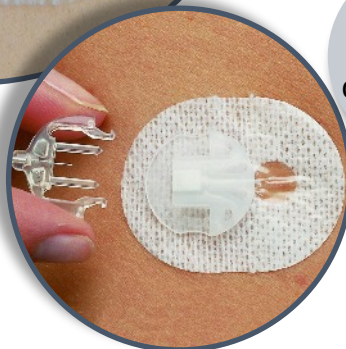


Very low volume kink-free tubing holds less than 0.2ml. No PVC contact with fluid

Integral comfortable adhesive dressing

Low profile connector system

Detachable for patient convenience



LR006/19BM