

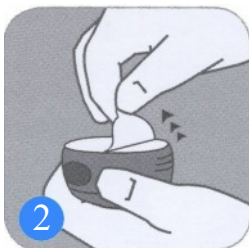
## Medtronic i-port Abbreviated Instructions

Users should familiarise themselves with the manufacturer's full instructions for use before using this device.

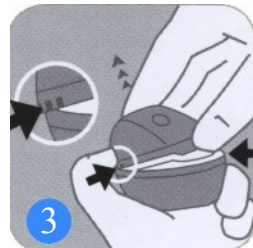
Clean your hands and prepare the infusion site according to local guidelines.  
Remove the i-port from its box.



Pull the red tab and remove the seal



Peel off the sterile paper cover



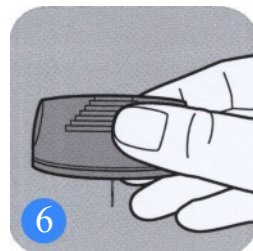
Securely hold the inserter and remove the plastic lid



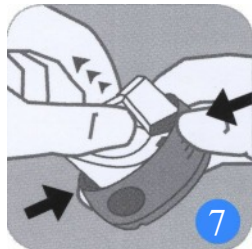
Remove the adhesive liner from the adhesive tape



Twist and remove the needle guard from the introducer needle



Hold the i-port with the introducer needle facing down



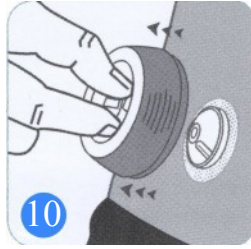
Hold the i-port with your fingers on the **lined ridges** and pull up on the centre of the inserter until it clicks into the locked position



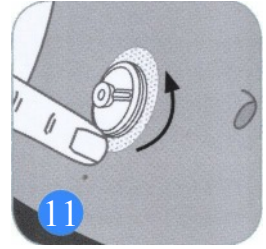
Place the i-port against the prepared site and squeeze **both smooth round indentations** simultaneously to insert the device



9  
Press down on the centre of the inserter to secure the i-port to the skin



10  
Grip the centre of the inserter only, and gently pull to remove the inserter from the i-port

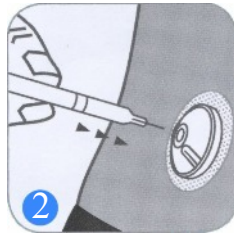


11  
Smooth the adhesive pad to secure it against the skin

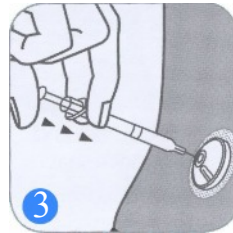
## Using the i-port



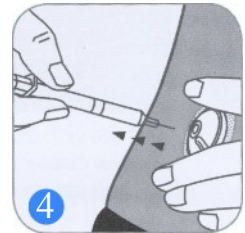
1  
Clean the septum before each injection



2  
Insert the needle into the septum



3  
Slowly inject the prescribed amount of medicine



4  
Remove the injection needle

**Please note that even though the needle has not penetrated the skin it should still be regarded as a contaminated sharp and disposed of in the recommended way.**

To remove the i-port just take hold of the edge of the adhesive pad and remove from the skin.

Dispose of the i-port in a container for contaminated waste.

