

## CRONOFILL Adaptor User Guide: 50mL Syringe.

The CRONOFILL is designed to simplify the process of filling larger volume syringes for use with the Crono Syringe driver models Crono SC50, Crono S-PID 50, Crono S-PID 100.



Slide plunger up and down to ensure free movement and pull back to the 50mL fill position.



Twist the plastic pusher to remove it from the syringe assembly.



Wind the rotating ring towards the rear of the CRONOFILL. Screw the CRONOFILL adaptor into the syringe assembly.



Advance the plunger to the forward position. Rotate the ring so that it sits flush against the rear of the syringe. Insert spike (preferred) or needle into the vial.

Rotate the ring in the direction shown to slowly draw up the required drug volume.



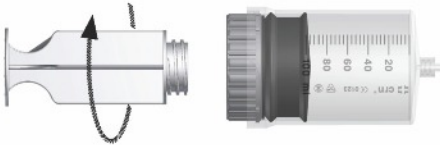
When you have reached the desired volume, rotate the CRONOFILL adaptor to remove from the syringe assembly and mount the syringe on the pump, following standard procedures.

## CRONOFILL Adaptor User Guide: 100mL Syringe.

The CRONOFILL is designed to simplify the process of filling larger volume syringes for use with the Crono syringe driver models Crono SC50, Crono S-PID 50, Crono S-PID100.



Slide plunger up and down to ensure free movement and pull back to the 100mL fill position.



Twist the plastic pusher to remove it from the syringe assembly.



Wind the rotating ring towards the rear of the CRONOFILL. Screw the CRONOFILL adaptor into the syringe assembly.



Advance the plunger to the forward position. Rotate the ring so that it sits flush against the rear of the syringe. Insert spike (preferred) or needle into the vial.

Rotate the ring in the direction shown to slowly draw up the required drug volume.



When you have reached the desired volume, rotate the CRONOFILL adaptor to remove from the syringe assembly and mount the syringe on the pump, following standard procedures.